

Roller Coasters!

A roller coaster is a ride that consists of a network of tracks with hills and slopes and passenger cars that ride along them. Many people enjoy the thrill of riding a coaster, as they are often called. Today, roller coasters are powered by mechanical engines, but the earliest coasters were powered by gravity. The first prototype of a roller coaster was invented in the Russian mountains in the 1700's. Riders would have to climb stairs to reach the top of the wooden tracks that were covered in ice. The carts were simple sleds with wheels attached. More-advanced models began to spring up around Europe. In America in the 1800's, the Mauch Chunk Switchback Railway, originally used to transport materials from the mines, was used as a passenger amusement ride. This is considered to be the birth of American roller coasters. The 1920's would usher in a Golden Age of roller coasters, starting at New York's Coney Island. The Cyclone, built in 1927, is the oldest operating coaster in the world today. After the Great Depression of the 1930's, many coasters that were shut down did not reopen. The opening of a new coaster, The Racer, at Kings Island Amusement Park in 1972 is considered to be the rebirth of the American coaster. Today, the tallest steel coaster, the Kingda Ka, stands 456 feet high. The fastest coaster, the Formula Rossa, travels at 149 mph.



Famous Coaster Word Search

Circle the words hidden in the puzzle.

C J Y S T O R M R U N N E R O
 Q Y Q H K O P Y Z T R N X P F
 T P C K I N G D A K A Y N A O
 X Z N L L W M O N T U D N H R
 Z S H C O G T H E B E A S T M
 N P F J G N E L T O R O Y V U
 Y S N K D I E G Q P T Q M I L
 S P A C E M O U N T A I N P A
 G R I F F O N H N W G E W E R
 S P D F E B Z I R J W M E R O
 S U E V H E H Q R T S V X M S
 S C R E E C H I N E A G L E S
 Z Z T H E R A C E R X Q E F A
 L Z G H M A V E R I C K V X N
 T H E C O M E T G O L I A T H

Hidden Words:

Cyclone, El Toro, Formula Rossa, Goliath, Griffon, Kingda Ka, Maverick, Montu, Screech-in Eagle, Space Mountain, Storm Runner, The Beast, The Comet, The Racer, Viper

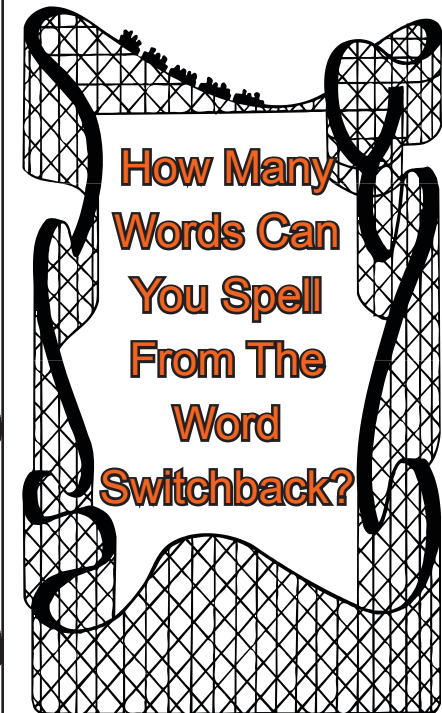
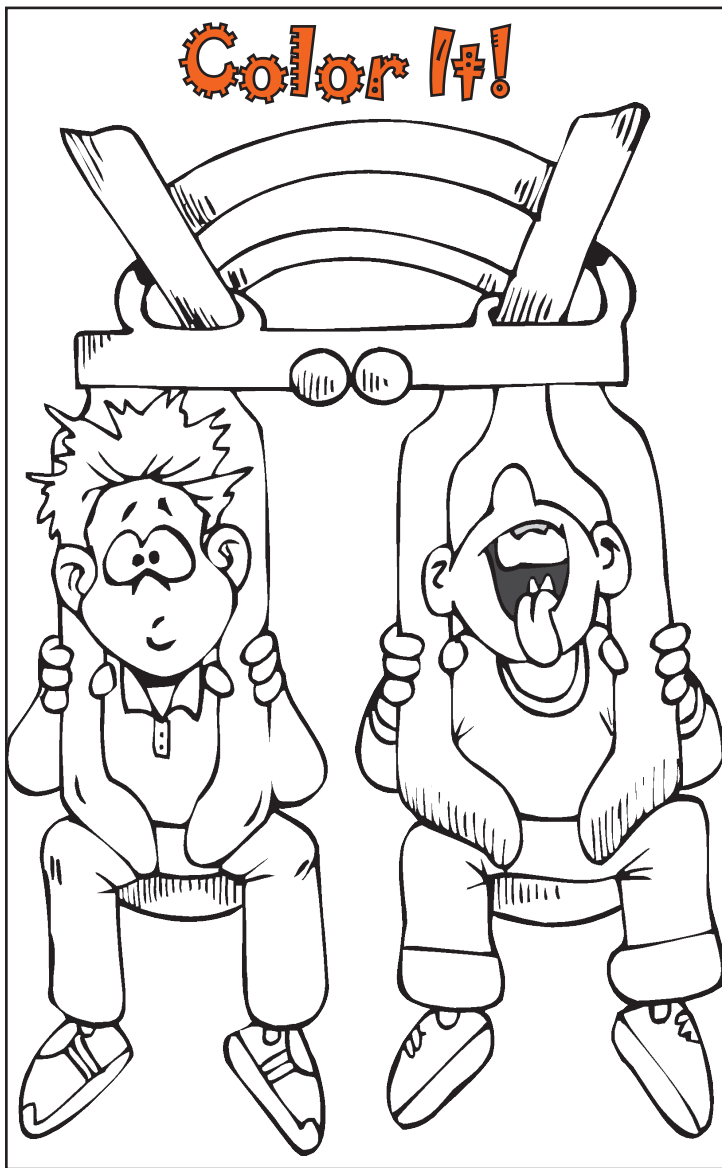
Across Clues:

- A ride that consists of hills and slopes.
- Kings Island is the home of which famous roller coaster?
- The first coasters were powered by what force?
- In which Country were roller coasters first invented?
- The Mauch Chunk Switchback Railway was located here.
- Famous amusement park in New York.

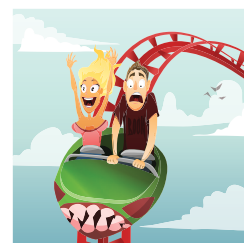
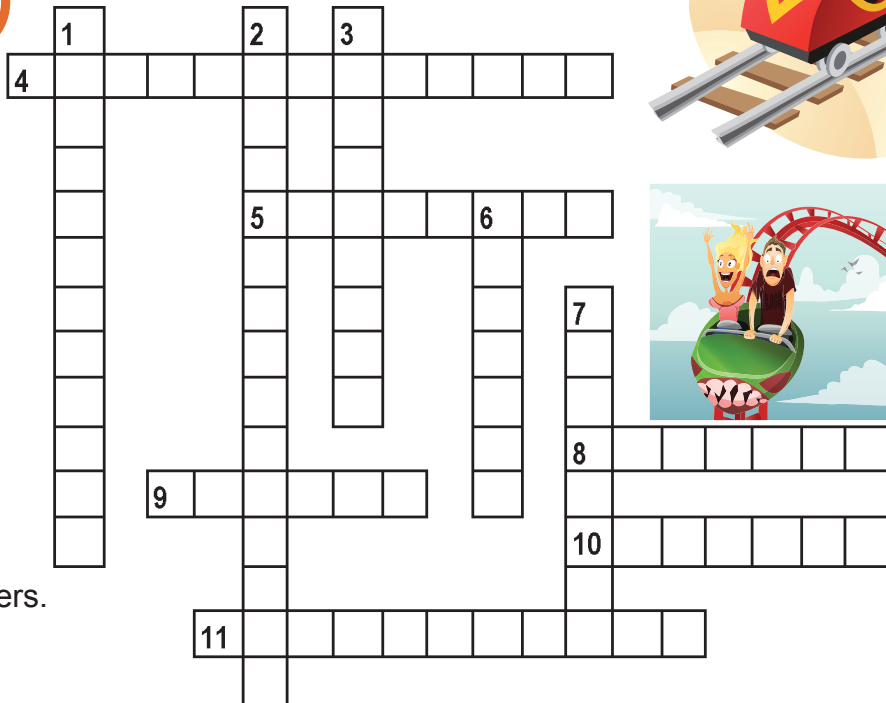
Down Clues:

- Currently the fastest steel roller coaster in the World.
- This event created a decline in coasters in the 1920's.
- The 1920's were considered the _____ of roller coasters.
- Name of a famous roller coaster that was at Coney Island.
- Currently the tallest steel roller coaster in the World.

Color It!



Coaster Crossword



Kingda Ka
 Golden Age (6) Cyclone (7)
 Great Depression (3)
 Formula Rossa (1)
 Coney Island (11)
 Russia (9)
 Gravity (8)
 The Racer (5)
 Roller Coaster (4)
 Across-4)
 Crossword Ans: Across-4)
 Roller Coaster (5) The Rac-
 er (8) gravity (9) Russia (10)
 America (11) Coney Island
 Down-1) Formula Rossa
 (3) Great Depression (3)
 Golden Age (6) Cyclone (7)
 Kingda Ka

A Special Thank You To All Our Sponsors!